

Assembly Procedure

Please follow the information provided in this section to perform the complete assembly procedure of the notebook. Be sure to use proper tools described before.

After you have completed the previous chapter of complete disassembly, please follow this chapter to assemble the notebook back together. This chapter describes the procedures of the complete notebook assembly. In addition, in between procedures, the detailed assembly procedure of individual modules will be provided for your service needs.

The assembly procedure consists of the following steps:

- Bottom Case Module
- Motherboard Module
- Top Case Module
- CPU Module
- LCD Module
- Memory Module
- Wireless LAN Module
- VGA Module
- Keyboard Module
- Optical Drive Module
- HDD Module
- Battery Module

Bottom Case Module

The illustrations below show how to assemble and install the bottom case module of the notebook.

1. Install the right side USB connector to the bottom case. (Fig1.1)



Fig1.1

2. Install the floppy module to the bottom case. (Fig1.2)

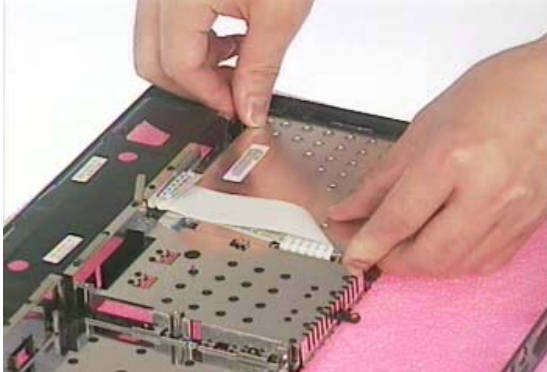


Fig1.2

Motherboard Module

The illustrations below show how to assemble and install the motherboard module of the notebook.

1. Install PCMCIA module to the bottom case. (Fig2.1)
2. Secure 4 screws (M2*4L) on motherboard as shown in (Fig2.2)

ASSEMBLY PROCEDURE

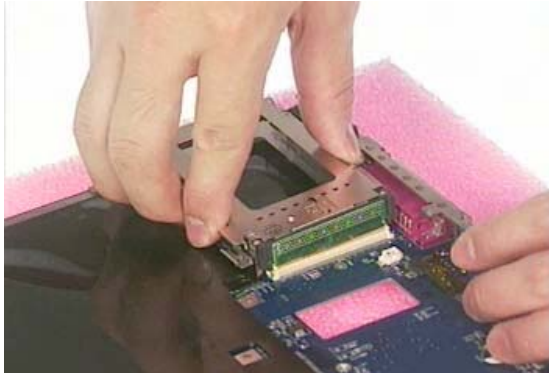


Fig2.1

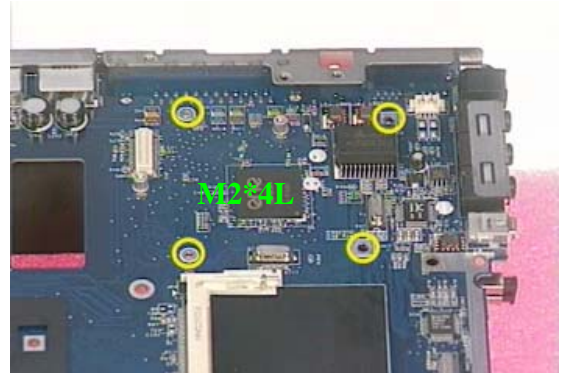


Fig2.2

3. Install modem module to motherboard and connect its cable. (Fig2.3) then secure 2 screws (M2*4L) to fix it.

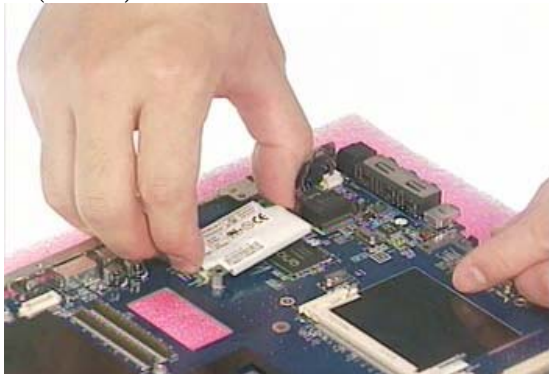


Fig2.3



Fig2.4

4. Install the motherboard to bottom case carefully and lay it down in place. (Fig2.5)

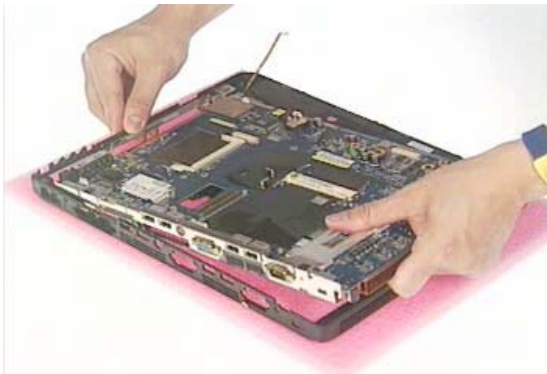


Fig2.5

5. Secure 2 screws (M2.5*6L) at back side as shown in (Fig2.6) and 5 screws (M2*4L) on the motherboard.

ASSEMBLY PROCEDURE



Fig2.6

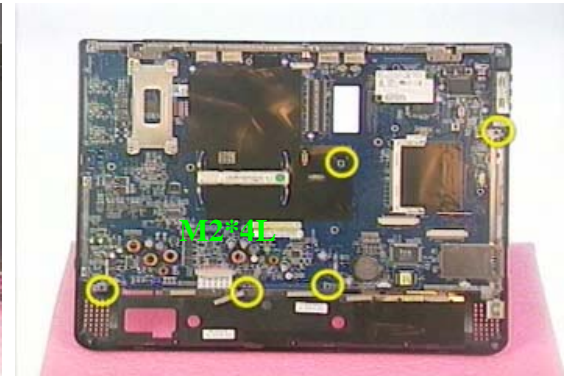


Fig2.7

6. Connect floppy FPC cable to the motherboard. (Fig2.8)
7. Connect USB cable at right side. (Fig2.9)



Fig2.8

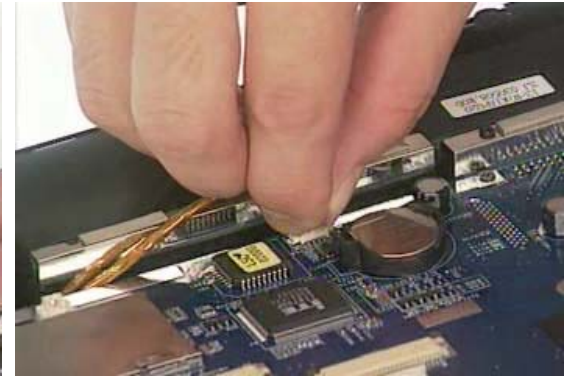


Fig2.9

8. Install right speaker and connect its cable. (Fig2.10)
9. Install left speaker and connect its cable.(Fig2.11)



Fig2.10



Fig2.11

Top Case Module

The illustrations below show how to assemble and install the top case module of the notebook.

1. Place touch pad board and cover on the touch pad holder. (Fig3.1) and then push it down to secure it. (Fig3.2)



Fig3.1



Fig3.2

2. Install the LED and touch pad board. (Fig3.3)
3. Install the touch pad bracket (Fig3.4) and secure 4 screws (M2*4L) to fix it. (Fig3.5)
4. Connect touch pad FPC cable. (Fig3.6)

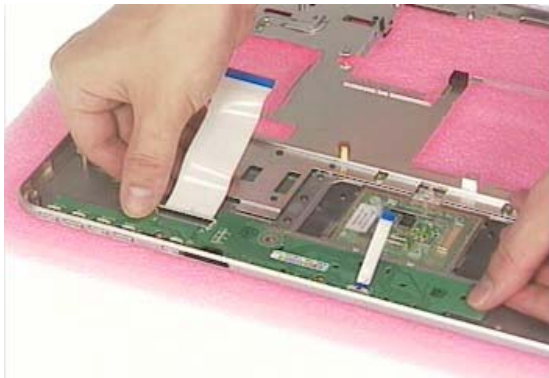


Fig3.3

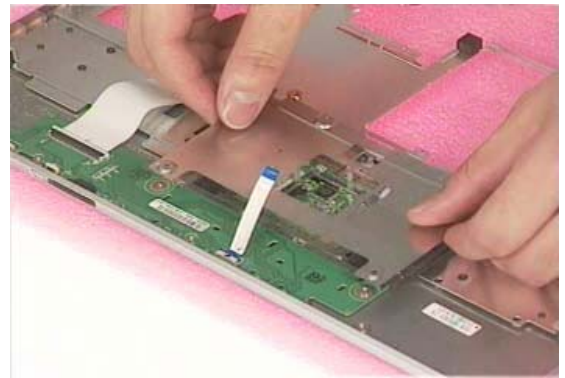


Fig3.4

ASSEMBLY PROCEDURE

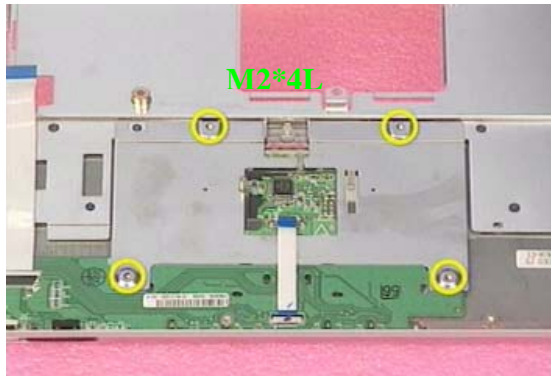


Fig3.5



Fig3.6

5. Combine top case module and bottom case module. (Fig3.7)



Fig3.7

6. Secure 1 screw (M2.5*6L) on the right side. (Fig3.8) and stick 1 mylar pad over it. (Fig3.9)

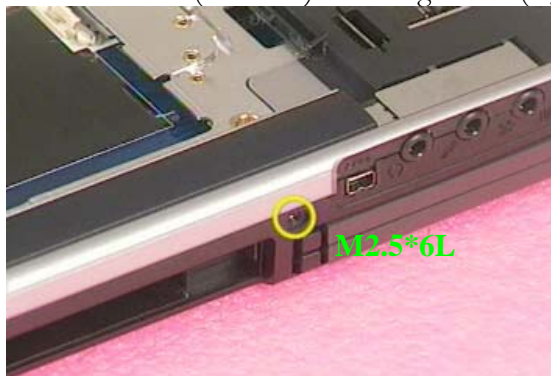


Fig3.8

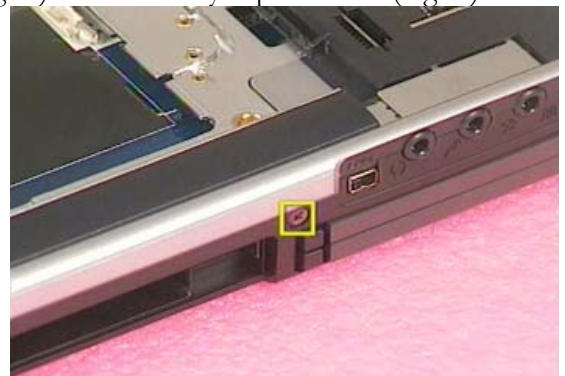


Fig3.9

7. Secure 9 screws on the back side of the notebook. (Fig3.10) and 7 screws (M2.5*6L) on the top case. (Fig3.11)

ASSEMBLY PROCEDURE

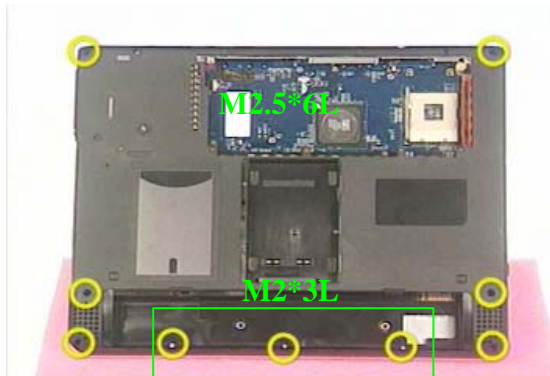


Fig3.10

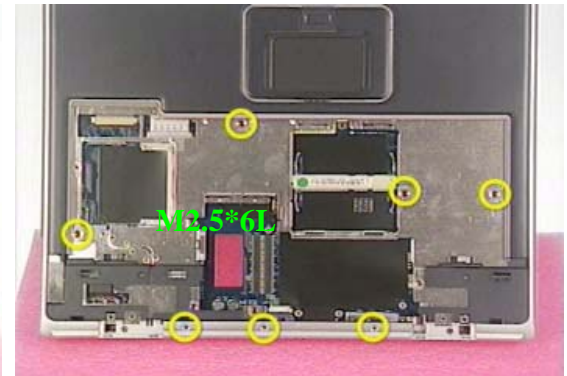


Fig3.11

10. Stick 3 mylar pads as shown in (Fig3.12)
11. Connect LED FPC cable. (Fig3.13)

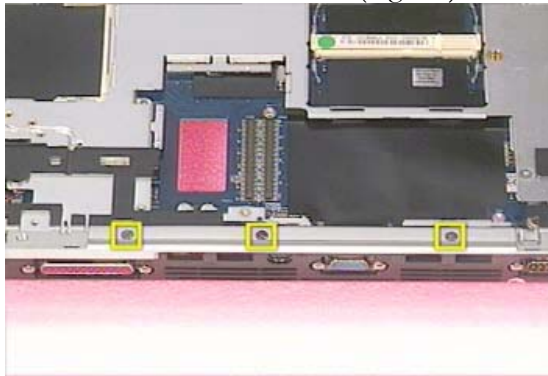


Fig3.12

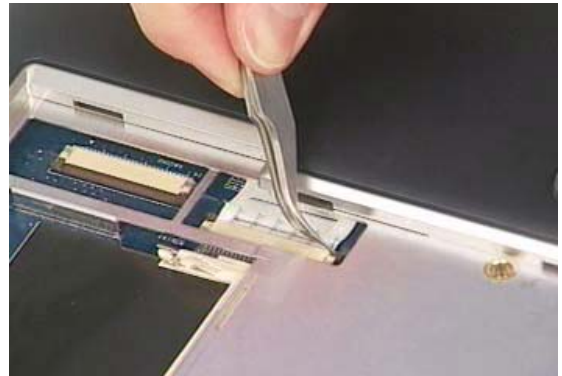


Fig3.13

CPU Module

The illustrations below show how to assemble and install the CPU module of the notebook.

1. Pull up the socket lever up to 90 degrees. (Fig4.1) then install CPU to socket and push down the socket lever to secure CPU. (Fig4.2)

ASSEMBLY PROCEDURE

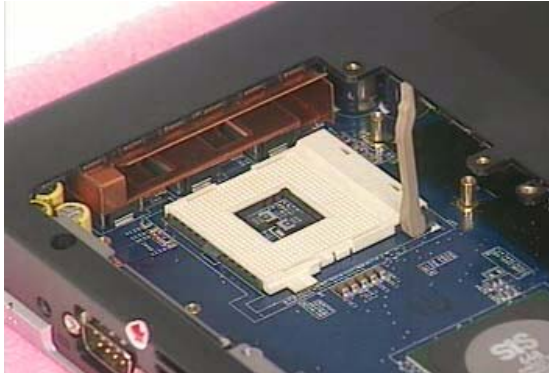


Fig4.1

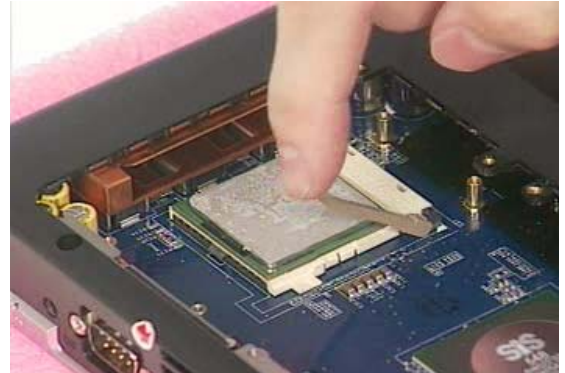


Fig4.2

2. Install heat sink module onto CPU. (Fig4.3)
3. Secure 4 screws (M2*4L) to secure heat sink module. (Fig4.4)



Fig4.3

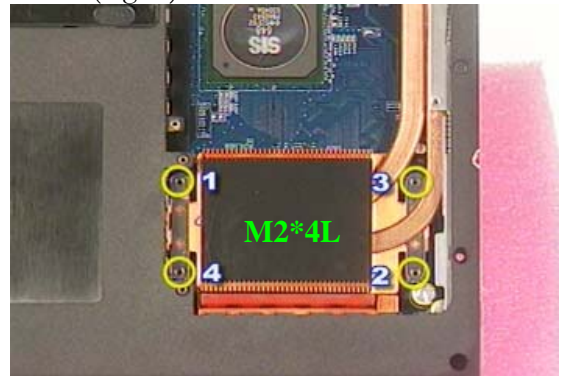


Fig4.4

4. Stick the CPU warranty seal label on the screw as shown in (Fig4.5)
5. Connect 2 fan cables to motherboard. (Fig4.6) then install the fan module. (Fig4.7)
6. Secure 5 screws (M2*4L) to fix the fan module. (Fig4.8)

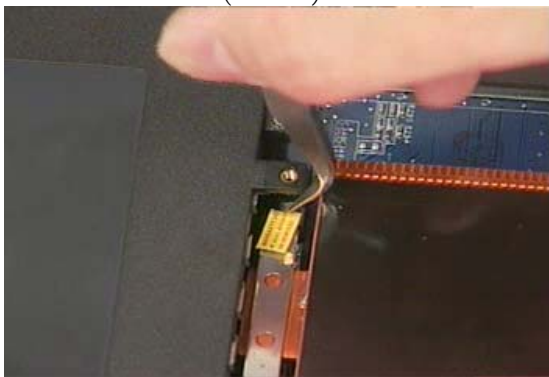


Fig4.5

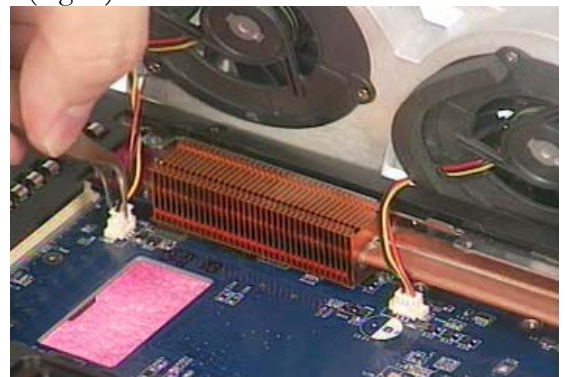


Fig4.6

ASSEMBLY PROCEDURE



Fig4.7

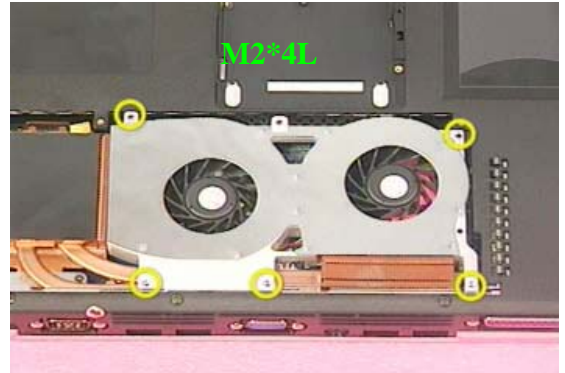


Fig4.8

7. Put on the CPU door. (Fig4.9) then secure 5 screws (M2*4L) to fix it. (Fig4.10)



Fig4.9



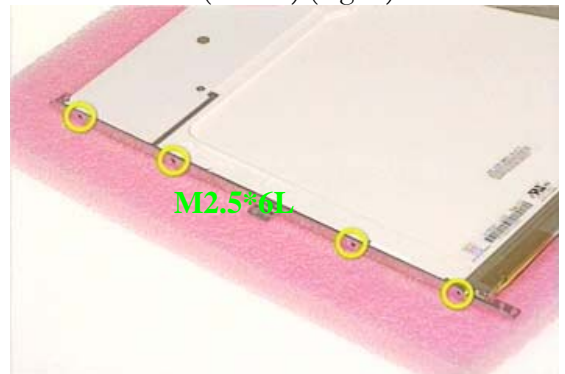
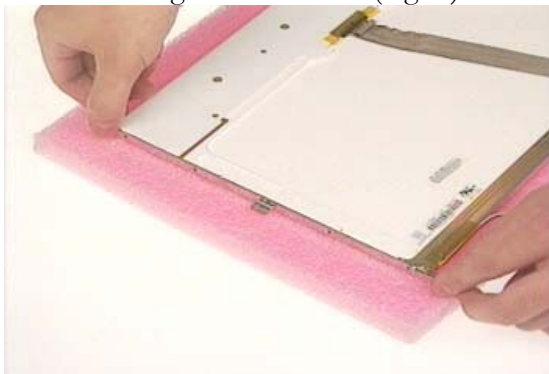
Fig4.10

LCD Module

LCD MODULE
ASSEMBLY

The illustrations below show how to assemble and install the LCD module into the notebook.

1. Install the left LCD bracket (Fig5.1) and secure with 4 screws (M2*4L) (Fig5.2)
2. Install the right LCD bracket (Fig5.3) and secure with 4 screws (M2*4L) (Fig5.4)



ASSEMBLY PROCEDURE

Fig 5.1

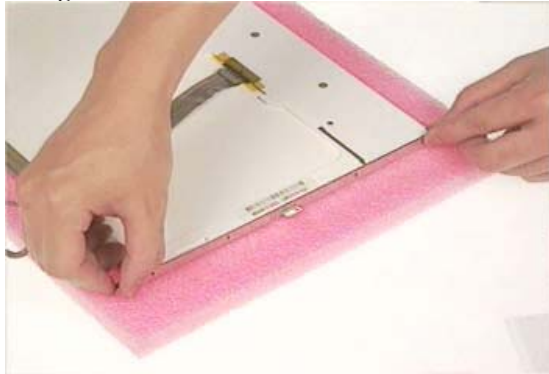


Fig5.2

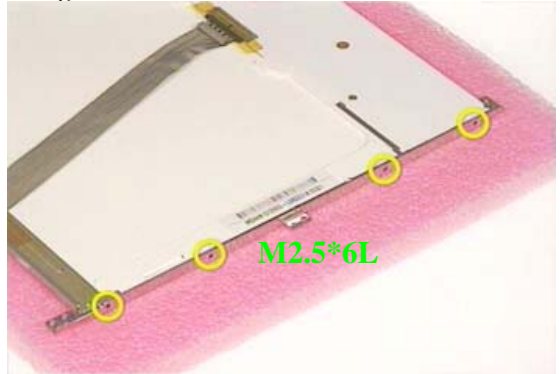


Fig5.3

Fig5.4

3. Attach right WLAN antenna cable (black) (Fig5.5) and left WLAN antenna cable. (white) (Fig5.6)



Fig5.5

Fig5.6

4. Put on the left hinge (Fig5.7) and right hinge on the other side. (Fig5.8)

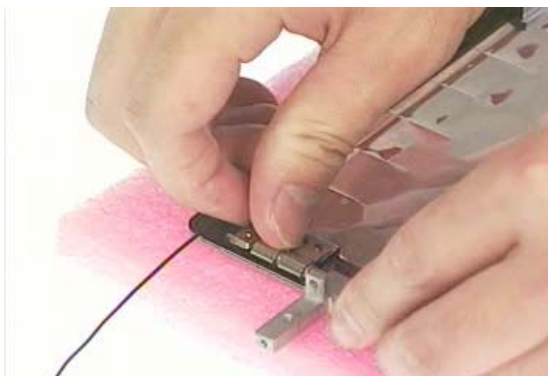


Fig5.7

Fig5.8

ASSEMBLY PROCEDURE

7. Place the LCD module onto back cover. (Fig5.9)



Fig5.9

8. Secure 1 screw (M2.5*6L) on the left side of LCD panel (Fig5.10), and 1 screw on the other side. (M2.5*6L) (Fig5.11)
9. Secure 2 screws (M2.5*6L) on the left hinge (Fig5.12) and 2 screws on the other side. (Fig5.13)



Fig5.10



Fig5.11



Fig5.12



Fig5.13

10. Connect LCD coaxial cable and inverter power cable then attach the inverter board. (Fig5.14)
11. Stick 1 tape over LCD coaxial cable. (Fig5.15) and the other tape on inverter power cable. (Fig5.16)

ASSEMBLY PROCEDURE



Fig5.14



Fig5.15



Fig 5.16

12. Combine LCD bezel and LCD back cover. (Fig5.17)

13. Secure 5 screws (M2.5*6L) on the LCD bezel. (Fig5.18) and stick the 5 rubber pads on top. (Fig5.19)



Fig5.17



Fig5.18

ASSEMBLY PROCEDURE



Fig5.19

14. Install the LCD panel to the system. (Fig5.20)



Fig5.20

15. Route the WLAN antenna cables properly. (Fig5.21) and stick 1 tape over the cable. (Fig5.22)

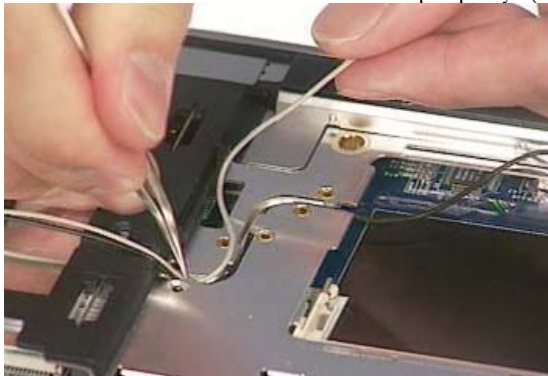


Fig5.21

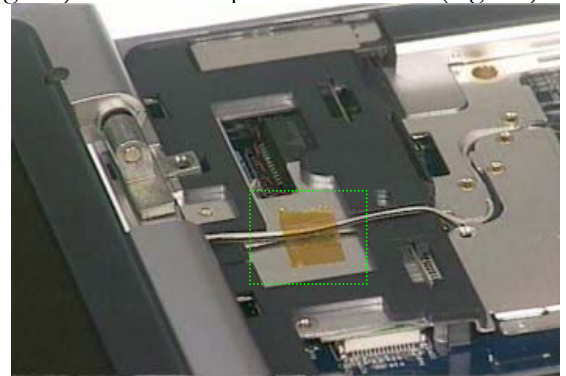


Fig5.22

16. Put on left hinge cover (Fig.5.23) and right hinge cover. (Fig5.24)

ASSEMBLY PROCEDURE



Fig5.23



Fig5.24

17. Secure 2 screws (M2.5*6L) on the left hinge cover (Fig5.25) and 2 screws (M2.5*6L) on the other side. (Fig5.26)

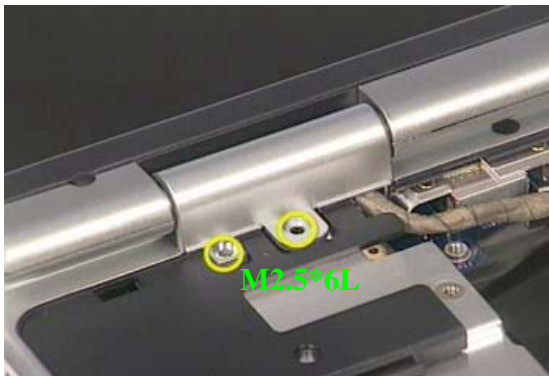


Fig5.25

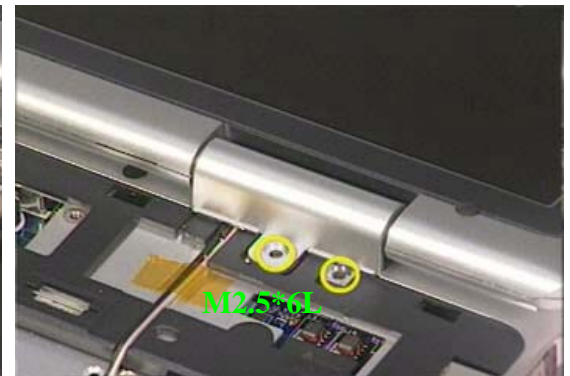


Fig5.26

18. Secure 2 screws (M2.5*6L) as show in (Fig5.27) and stick 1 mylar pad on top. (Fig5.28)

19. Secure 2 screws (M2.5*6L) on the other side. (Fig5.29) and stick 1 mylar pad. (Fig5.30)



Fig5.27



Fig5.28

ASSEMBLY PROCEDURE



Fig5.29



Fig5.30

MEMORY
MODULE
ASSEMBLY

Memory Module

The illustrations below show how to assemble and install the memory module of the notebook.

1. Insert a memory to DIMM socket at 45 degrees angle (Fig6.1) then push down to secure it. (Fig6.2)
2. Secure 1 screw (M2.5*6L) to fix the DIMM cover. (Fig6.3)



Fig6.1



Fig6.2



Fig6.3

Wireless LAN Module

The illustrations below show how to assemble and install the wireless LAN module of the notebook.

1. Install a mini-PCI adapter at 45 degrees angle then push down to secure it. (Fig7.1)
2. Connect the 2 wireless antenna cable. (Fig7.2)

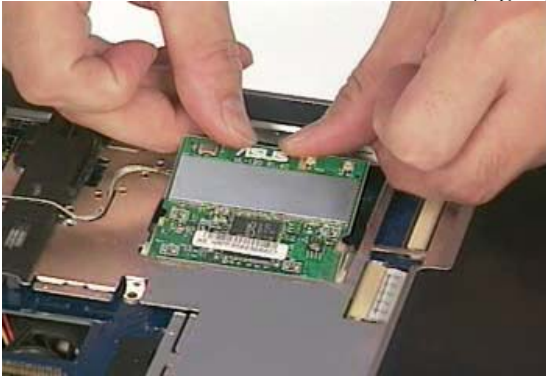


Fig7.1



Fig7.2

3. Put the mini-PCI cover on. (Fig7.3) then secure 1 screw (M2.5*6L) to fix it. (Fig7.4)

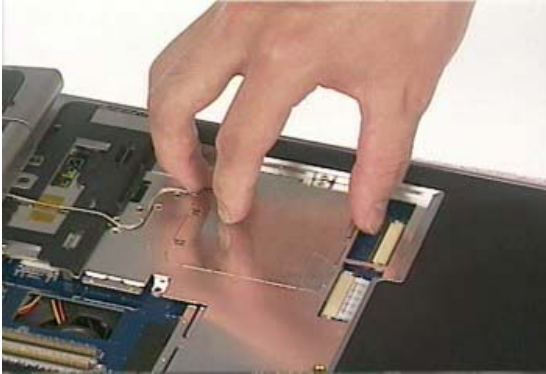


Fig7.3

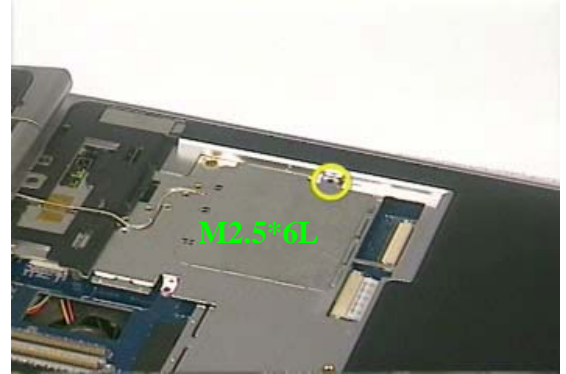


Fig7.4

VGA Module

The illustrations below show how to assemble and install the VGA module of the notebook.

1. Install VGA board to the motherboard. (Fig8.1)
2. Secure 2 screws (M2.5*6L) to fix the VGA board. (Fig8.2)

ASSEMBLY PROCEDURE



Fig 8.1

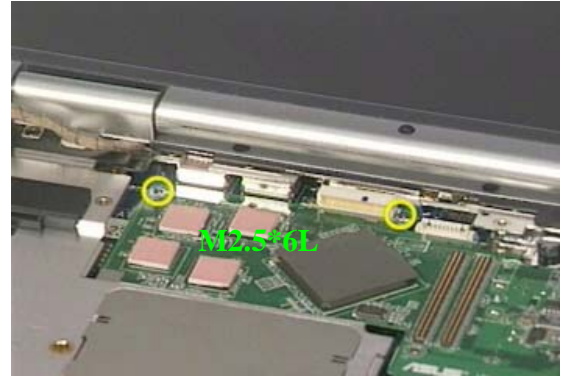


Fig8.2

3. Connect LCD coaxial cable. (Fig8.3) and secure 1 screw (M2.5*6L) to fix the cable.

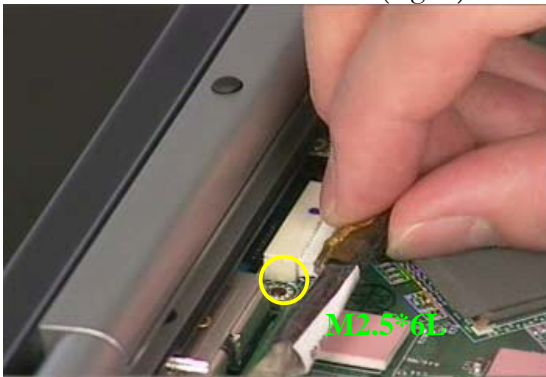


Fig8.3

4. Put on the VGA cover. (Fig8.4)
5. Secure 5 screws (M2.5*6L) by the order as shown in (Fig8.5)

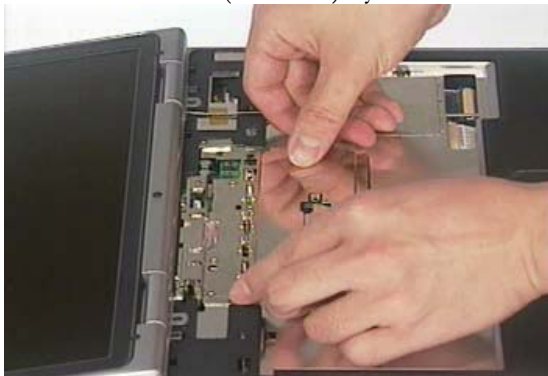


Fig8.4

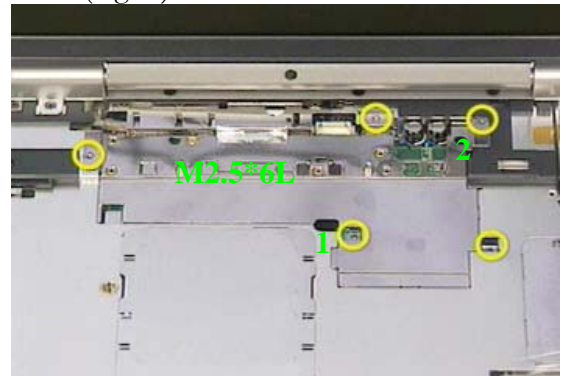


Fig8.5

KEYBOARD
MODULE
ASSEMBLY

Keyboard Module

The illustrations below show how to assemble and install the Keyboard Module

ASSEMBLY PROCEDURE

1. Connect the keyboard FPC cable. (Fig9.1)
2. Install keyboard to the system. (Fig9.2)



Fig9.1



Fig9.2

3. Install keyboard bracket and slide it to the right. (Fig9.3)
4. Secure 2 screws (M2*4L) on the keyboard bracket to fix keyboard. (Fig9.4)



Fig9.3

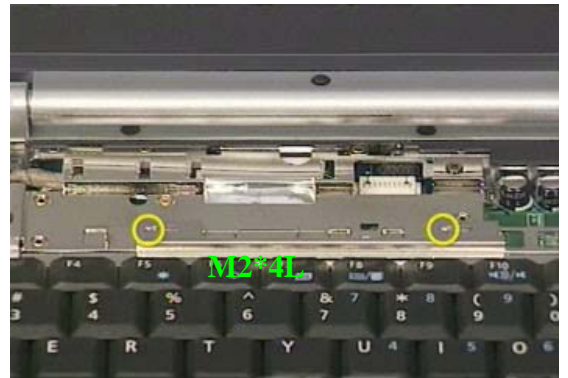


Fig9.4

5. Place the switch board on the keyboard cover. (Fig9.5) secure with 2 screws (M2*4L) (Fig9.6)

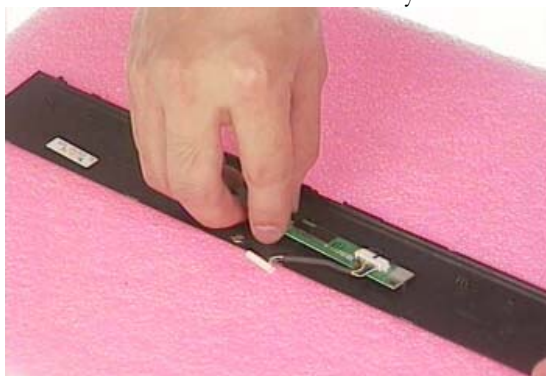


Fig9.5



Fig9.6

ASSEMBLY PROCEDURE

6. Connect switch cable. (Fig9.7)
7. Install keyboard cover to system. (Fig9.8)

Note: push down and ensure all latches associated are secured properly.



Fig9.7



Fig9.8

OPTICAL DRIVE ASSEMBLY

Optical Drive Module

The illustrations below show how to assemble and install the optical drive module of the notebook.

1. Insert the optical driver to its compartment. (Fig10.1) and push it until it's connected completely.
2. Secure 2 screws (M2*4L) to fix the optical drive module. (Fig10.2)



Fig10.1

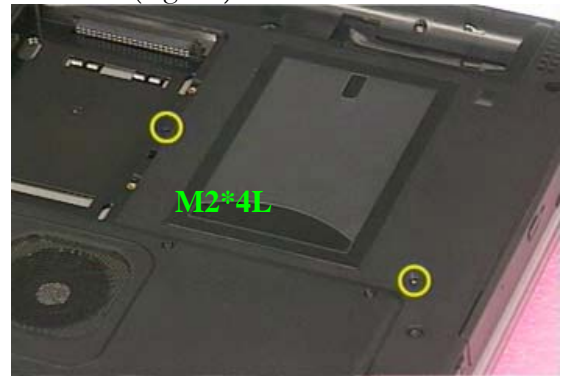


Fig10.2

HDDMODULE ASSEMBLY

HDD Module

The illustrations below show how to assemble and install the HDD module of the notebook

1. Put the hard disk module at 45 degrees angle (Fig11.1) and lay it down gently then push it toward the direction of arrow until it's connected completely. (Fig11.2)
2. Put on the hard disk cover (Fig 11.3) and secure with 2 screws to fix it. (Fig11.4)

ASSEMBLY PROCEDURE



Fig11.1

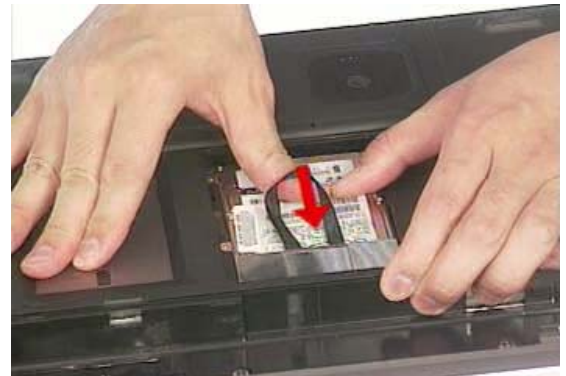


Fig11.2



Fig11.3



Fig11.4

BATTERY
MODULE
ASSEMBLY

Battery Module

The illustrations below show how to install the battery module of the notebook

1. Put the battery pack to its compartment. (Fig12.1)



Fig12.1

2. Close the battery cover to secure the battery. (Fig12.2)

ASSEMBLY PROCEDURE



Fig12.2